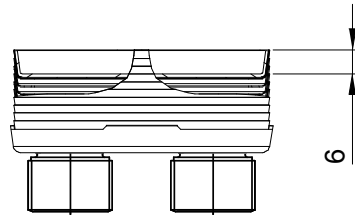
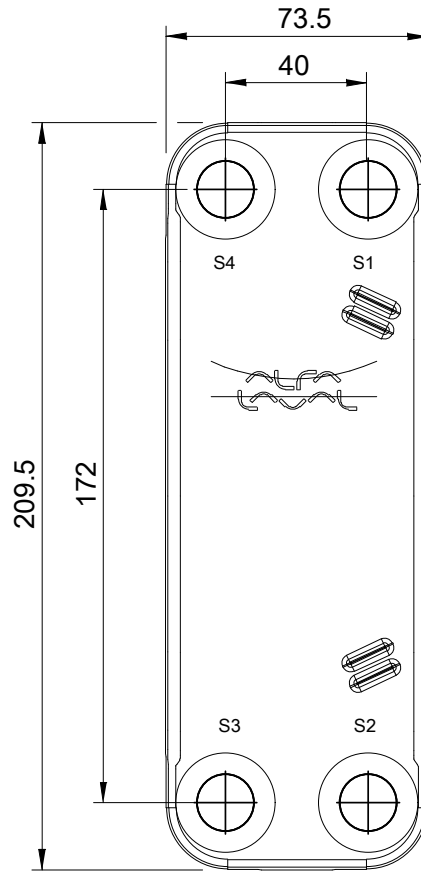
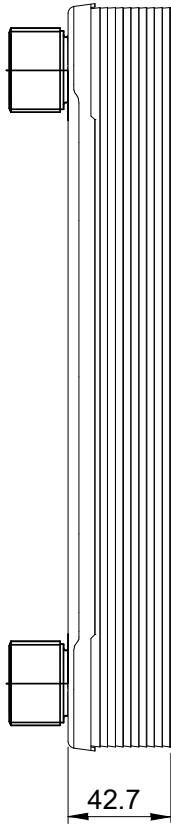
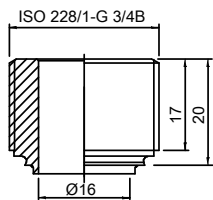


Note that all unique customer requirements (i.e tolerance) need to be verified thru Alfa Laval.

Z 31
Alloy 316
S1, S2, S3, S4



HEATING SURFACE
NETWEIGHT 1.11 kg
OPERATING WEIGHT
PLATE MATERIAL Alloy 316
PLATE GROUPING 1*8H/1*8H

T1 T2 T3 T4 locations on back side
correspond to S1 S2 S3 S4 on front side

ALL DIMENSIONS IN MILLIMETERS

| SIDE | MEDIA | INLET | TEMP. | OUTLET | TEMP. | FLOW RATE | PRESSURE DROP | LIQUID VOL. |
|------|-------|-------|-------|--------|-------|-----------|---------------|----------------------|
| 1 | | | | | | | | 0.22 dm ³ |
| 2 | | | | | | | | 0.22 dm ³ |

PRESSURE VESSEL APPROVAL

PED

CBH16-17H (3287099032)

www.alfalaval.com

CUSTOMER NAME / REF. NO.

TOTAL LENGTH 62.7 mm
TOTAL WIDTH 73.5 mm
TOTAL HEIGHT 209.5 mm

COMPANY / REF.
Wholesaler

8/24/2017
REV 0